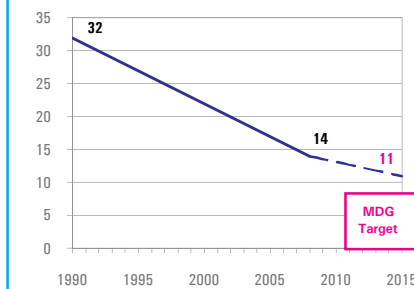


### DEMOGRAPHICS

Total population (000)	67,386	(2008)
Total under-five population (000)	4,843	(2008)
Total number of births (000)	977	(2008)
Under-five mortality rate (per 1,000 live births)	14	(2008)
Total number of under-five deaths (000)	14	(2008)
Infant mortality rate (per 1,000 live births)	13	(2008)
Neonatal mortality rate (per 1,000 live births)	9	(2004)
HIV prevalence rate (15-49 years, %)	1.4	(2007)
Population below international poverty line of US\$1.25 per day (%)	<2	(2004)

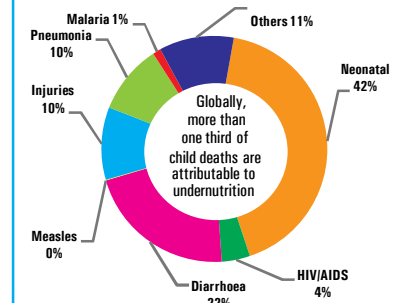
#### Under-five mortality rate

Deaths per 1,000 live births



Source: IGME 2009

#### Causes of under-five deaths, 2004



Source: WHO 2008

### NUTRITIONAL STATUS

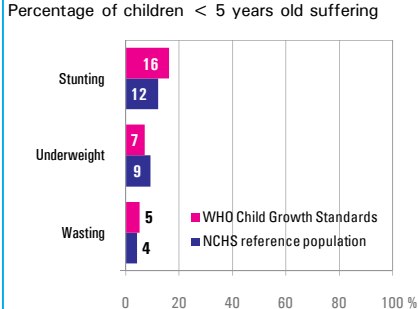
#### Burden of undernutrition (2008)

WHO Child Growth Standards

Stunted (under-fives, 000):	756	Underweight (under-fives, 000):	339
Share of developing world stunting burden (%):	0.4	Wasted (under-fives, 000):	228
Stunting country rank:	41	Severely wasted (under-fives, 000):	63

#### Current nutritional status

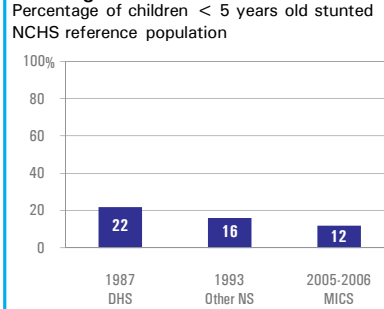
Percentage of children < 5 years old suffering



Source: MICS 2005-2006

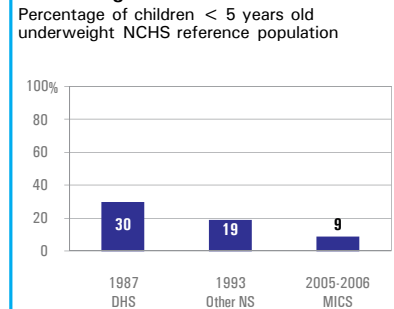
#### Stunting trends

Percentage of children < 5 years old stunted NCHS reference population



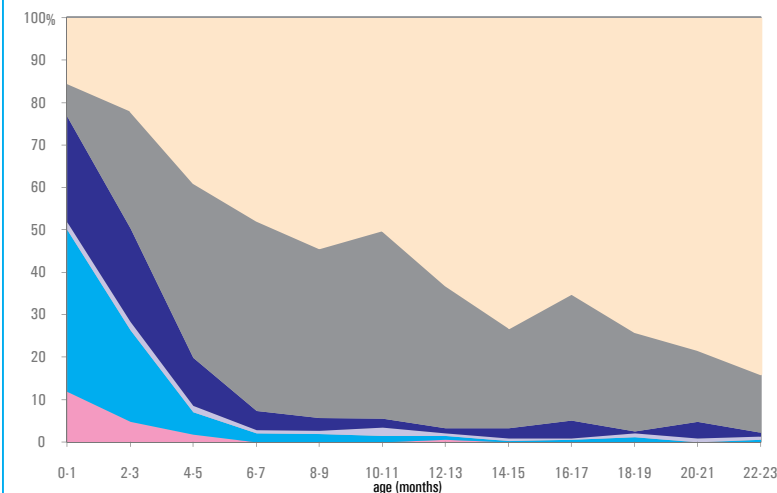
#### Underweight trends

Percentage of children < 5 years old underweight NCHS reference population



### INFANT AND YOUNG CHILD FEEDING

#### Infant feeding practices, by age



Source: MICS 2005-2006

#### Exclusive breastfeeding

Percentage of infants < 6 months old breastfed

