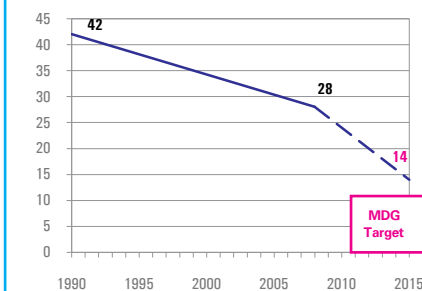


## DEMOGRAPHICS

Total population (000)	6,238	(2008)
Total under-five population (000)	736	(2008)
Total number of births (000)	154	(2008)
Under-five mortality rate (per 1,000 live births)	28	(2008)
Total number of under-five deaths (000)	4	(2008)
Infant mortality rate (per 1,000 live births)	24	(2008)
Neonatal mortality rate (per 1,000 live births)	12	(2004)
HIV prevalence rate (15-49 years, %)	0.6	(2007)
Population below international poverty line of US\$1.25 per day (%)	7	(2007)

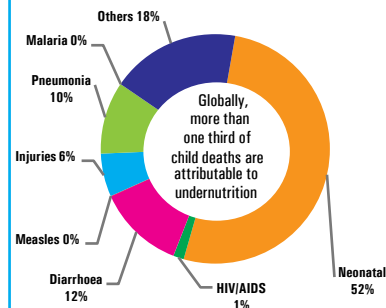
### Under-five mortality rate

Deaths per 1,000 live births



Source: IGME 2009

### Causes of under-five deaths, 2004



Source: WHO 2008

## NUTRITIONAL STATUS

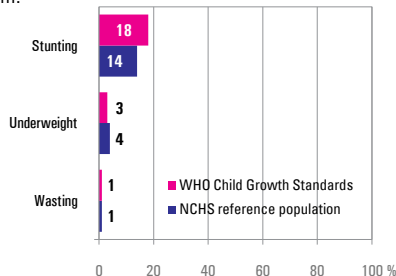
### Burden of undernutrition (2008)

WHO Child Growth Standards

Stunted (under-fives, 000):	129	Underweight (under-fives, 000):	25
Share of developing world stunting burden (%):	0.1	Wasted (under-fives, 000):	8
Stunting country rank:	81	Severely wasted (under-fives, 000):	-

### Current nutritional status

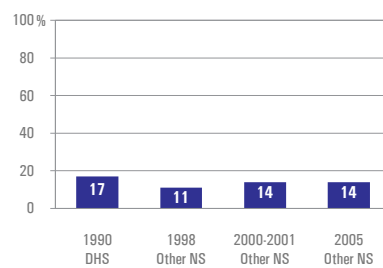
Percentage of children < 5 years old suffering from:



Source: Other NS 2005

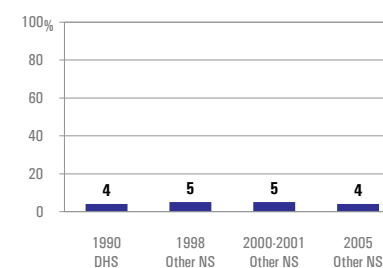
### Stunting trends

Percentage of children < 5 years old stunted NCHS reference population



### Underweight trends

Percentage of children < 5 years old underweight, NCHS reference population



## INFANT AND YOUNG CHILD FEEDING

### Infant feeding practices, by age

No Data

- Weaned (not breastfed)
- Breastfed and solid/semi-solid foods
- Breastfed and other milk/formula
- Breastfed and non-milk liquids
- Breastfed and plain water only
- Exclusively breastfed

### Exclusive breastfeeding

Percentage of infants < 6 months old exclusively breastfed

