

# Korea, Democratic People's Republic of

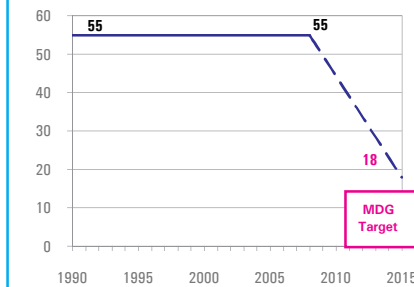
## Nutrition Profile

### DEMOGRAPHICS

|   |        |        |
|---|--------|--------|
| Total population (000)  | 23,819 | (2008) |
| Total under-five population (000)                                   | 1,575  | (2008) |
| Total number of births (000)  | 327    | (2008) |
| Under-five mortality rate (per 1,000 live births)                   | 55     | (2008) |
| Total number of under-five deaths (000)                             | 18     | (2008) |
| Infant mortality rate (per 1,000 live births)                       | 42     | (2008) |
| Neonatal mortality rate (per 1,000 live births)                     | 22     | (2004) |
| HIV prevalence rate (15-49 years, %)                                | -      | -      |
| Population below international poverty line of US\$1.25 per day (%) | -      | -      |

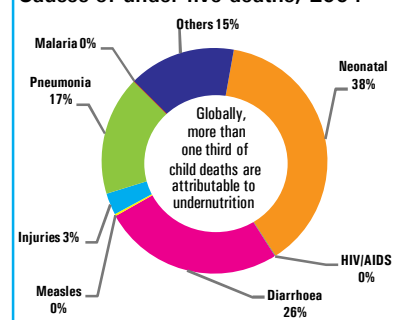
#### Under-five mortality rate

Deaths per 1,000 live births



Source: IGME 2009

#### Causes of under-five deaths, 2004



Source: WHO 2008

### NUTRITIONAL STATUS

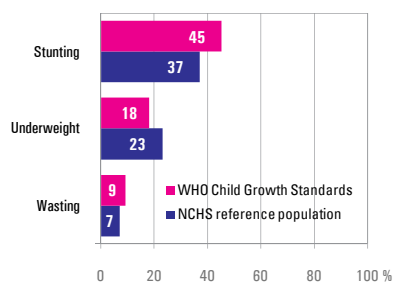
#### Burden of undernutrition (2008)

WHO Child Growth Standards

|  |     |                                     |     |
|--|-----|-------------------------------------|-----|
| Stunted (under-fives, 000):                    | 704 | Underweight (under-fives, 000):     | 280 |
| Share of developing world stunting burden (%): | 0.4 | Wasted (under-fives, 000):          | 137 |
| Stunting country rank:                         | 43  | Severely wasted (under-fives, 000): | 55  |

#### Current nutritional status

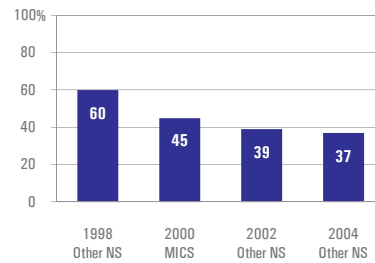
Percentage of children < 5 years old suffering



Source: Other NS 2004

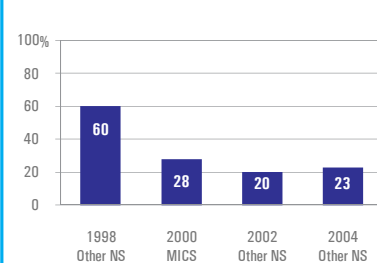
#### Stunting trends

Percentage of children < 5 years old stunted NCHS reference population



#### Underweight trends

Percentage of children < 5 years old underweight NCHS reference population



### INFANT AND YOUNG CHILD FEEDING

#### Infant feeding practices, by age

No Data

- Weaned (not breastfed)
- Breastfed and solid/semi-solid foods
- Breastfed and other milk/formula
- Breastfed and non-milk liquids
- Breastfed and plain water only
- Exclusively breastfed

#### Exclusive breastfeeding

Percentage of infants < 6 months old breastfed

